



VINYL POP USER MANUAL

April 2020





Contents

1.0	Introduction
2.0	About Vinyl Pop
3.0	Initial Setup
4.0	The Vinyl Mechanism
4.1	Mechanism Main Components
4.2	Loading Records
5.0	The Remote Control
6.0	Jukebox Controls
7.0	Remote control (Vinyl Pop) – Unused buttons
8.0	Bluetooth
9.0	Adjusting amplifier setup
10.0	External Speakers
11.0	Audio/Line Out

Free Inside

Included in the welcome pack supplied with your jukebox is a FREE 12 month subscription to Sound Leisure's Label Magic title card printing software.

To download your free copy of Label Magic, visit:
www.label-magic.com/sl

Once you have installed Label magic, use the code printed on the postcard included in your welcome pack to activate your free 12 month subscription.



I.0 Introduction

Thank you for purchasing a Classic Jukebox from Sound Leisure, the world's premier jukebox manufacturer. This product has been designed and built to give you many years of enjoyment and trouble free use.

This owner's guide provides all the information you will need to install and operate the jukebox safely.

Important Safety Instructions

1. Read these instructions.
2. Keep these instructions to refer to in future.
3. Heed all warnings stated in this documents at all times.
4. Follow all instructions as detailed herein.
5. Do not use this apparatus near water.
6. Clean only with a dry cloth.
7. Do not block any ventilation openings. Install in accordance with the manufacturer's instructions.
8. Do not install near any heat sources such as radiators, heat registers, stoves or other apparatus (including amplifiers) that produce heat.
9. Do not defeat the safety purpose of the polarized or grounding-type plug. A polarized plug has 2 blades with one wider than the other. A grounding type plug has two blades and a third grounding prong. The wide blade or the third prong are provided for your safety. If the provided plug does not fit into your outlet, consult an electrician for replacement of the obsolete outlet.
10. Protect the power cord from being walked on or pinched particularly at plugs, convenience receptacles, and the point where they exit from the apparatus.
11. Only use attachments/accessories specified by the manufacturer.
12. Use only the cart, stand, bracket or table specified by the manufacturer, or sold with the apparatus. When a cart is used, use caution when moving the cart/apparatus combination to avoid injury from tip-over.
13. Unplug this apparatus during lightning storms or when unused for long periods of time.
14. Refer all servicing to qualified service personnel. Servicing is required when the apparatus has been damaged in any way, such as if a power-supply cord or plug is damaged, liquid has been spilled or objects have fallen into the apparatus, the apparatus has been exposed to rain or moisture, does not operate normally or has been dropped.

Additionally

This jukebox contains high voltage & high temperature parts. Do not attempt to carry out any work that is not specifically instructed in this manual. If the jukebox fails to operate correctly, switch off and consult the trouble shooting guide at the end of this manual. No user serviceable parts inside.

This jukebox is heavy. Use caution when moving or attempting to lift the Vinyl Pop.

This appliance must be connected to a mains socket with a protective earth connection.



High voltage

The mains plug is the designated 'disconnection device' and as such should be readily operable.

'WARNING' to reduce the risk of fire or electric shock, do not expose this apparatus to rain or moisture.

Fuses should be replaced like for like at all times.

Terminals marked with the symbol above are considered hazardous live and external wiring connected to these terminals requires installation by an instructed person or the use of readymade contact leads.

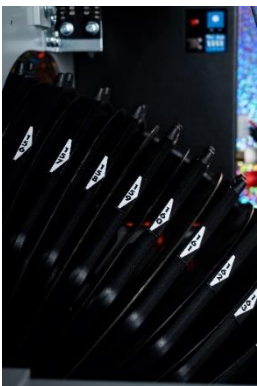
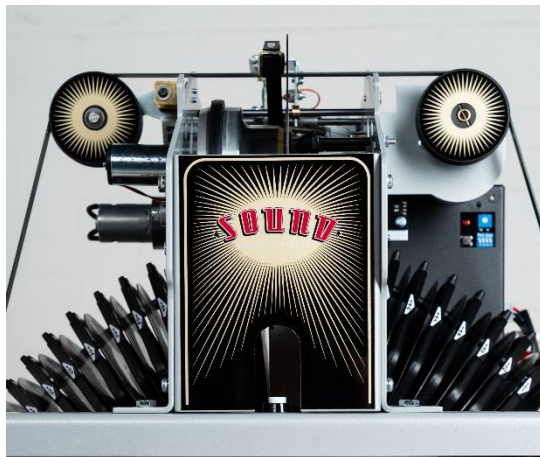
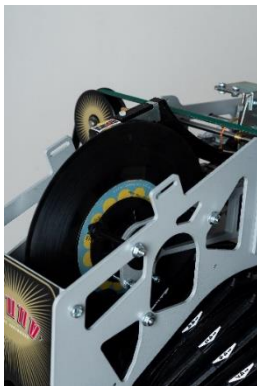
2.0 About Vinyl Pop

The Vinyl Pop holds 70 vinyl records and can play either side (A or B) independently. Each track can be selected using a unique 3 digit number. Side A numbers run from 100 to 169 and Side B numbers run from 200 to 269.

So for example, to select track A from the 10th record, enter 110.

To select track B from the 10th record, enter 210.

Selections are made and the jukebox controlled using the supplied remote control. The Vinyl Pop features a built in speaker in its base, but external speakers can also be connected using the connection plate on the rear of the cabinet. The Vinyl Pop also includes a data connected to allow the jukebox to be controlled by a 'Dime Box selector' manufactured by Sound Leisure. Please contact your agent if you require more information about this option.



Upon delivery the Jukebox please follow the following simple setup procedure detailed in section 3 prior to use.

Please DO NOT plug the power to the Vinyl Pop in until the steps specified at (3) have been completed.

3.0 Initial Setup

- 3.0.1 Positioned the jukebox in its intended position. The mains lead supplied with the jukebox is 2m long so please ensure the unit is positioned within 2m of a main outlet.
- 3.0.2 Remove the clear Perspex lid from the jukebox by lifting straight upwards using the handles on the left and right side. Place this safely to one side. With the vinyl jukebox mechanism now revealed:
- 3.0.3 Locate the 4x M6x70mm 'transit' bolts positioned at each corner of the silver mechanism metal framework. The bolts from the left side of the mechanism are highlighted in the image below, with 2 other bolts also on located on the right side of the mechanism



- a. The 'transit bolts' hold the mechanism firmly in place during transit for safety, but should be removed when the player is in its selected location.
- b. To remove the 'transit bolts' use a 10mm spanner to release the bolts and remove these completely from the vinyl mechanism framework.

PLEASE NOTE: The 'transit' bolts should be retained and secured back in place prior to the moving the jukebox at any point in the future.

3.1 Plugging the unit in

- 3.1.1 Locate the supplied mains lead and plug this into the main inlet on the rear of the jukebox cabinet. The mains inlet position is highlighted in white on the image on the right.
- 3.1.2 Plug the other end of the mains lead into the mains outlet.

3.2 Turning the jukebox power ON

- 3.2.1 Return to the rear of the jukebox and locate the mains power switch, positioned just above the mains lead.

Switch the jukebox mains power switch from the **0** position to the **I** position to power the unit **ON**.

The Jukebox is now switched on and ready to play.



3.3 Turning the jukebox power OFF

- 3.3.1 Please ensure all records are rejected from the jukebox mechanism.
See 6.3/6.4 - Rejecting the currently playing track
- 3.3.2 Return to the rear of the jukebox and locate the mains power switch, positioned just above the mains lead.
Switch the jukebox mains power switch from the **I** position to the **0** position to power the unit **OFF**.
The Jukebox is now switched OFF.

4.0 The Vinyl Mechanism

The jukebox holds 70 vinyl records and can play both sides (A & B). Each record has a unique number to enable either the A or B side to be selected. Side A numbers run from 100 to 169 and side B numbers run from 200 to 269.

The Vinyl Pop selects the chosen record by rotating the mechanism to the required position, then raising the record to the play deck before moving the stylus in to place for playback.

When loading the basket, ensuring the following will ensure correct playback:

1. Ensure the records are fully inserted in to the basket and correctly loaded.
2. Ensure each record is positioned in the correct position in the basket
3. Ensure all records are facing the correct direction to ensure the A and B sides are correctly aligned.

WARNING

USING THE JUKEBOX WITHOUT A FULL BASKET OF RECORDS

When using the jukebox without a full basket of records (e.g. one record in each basket position from 100 – 169) please ensure records are evenly spaced out around the basket as failure to do so can result in an unbalance basket which may cause the mechanism to fault.

CAUTION! MOVING PARTS!

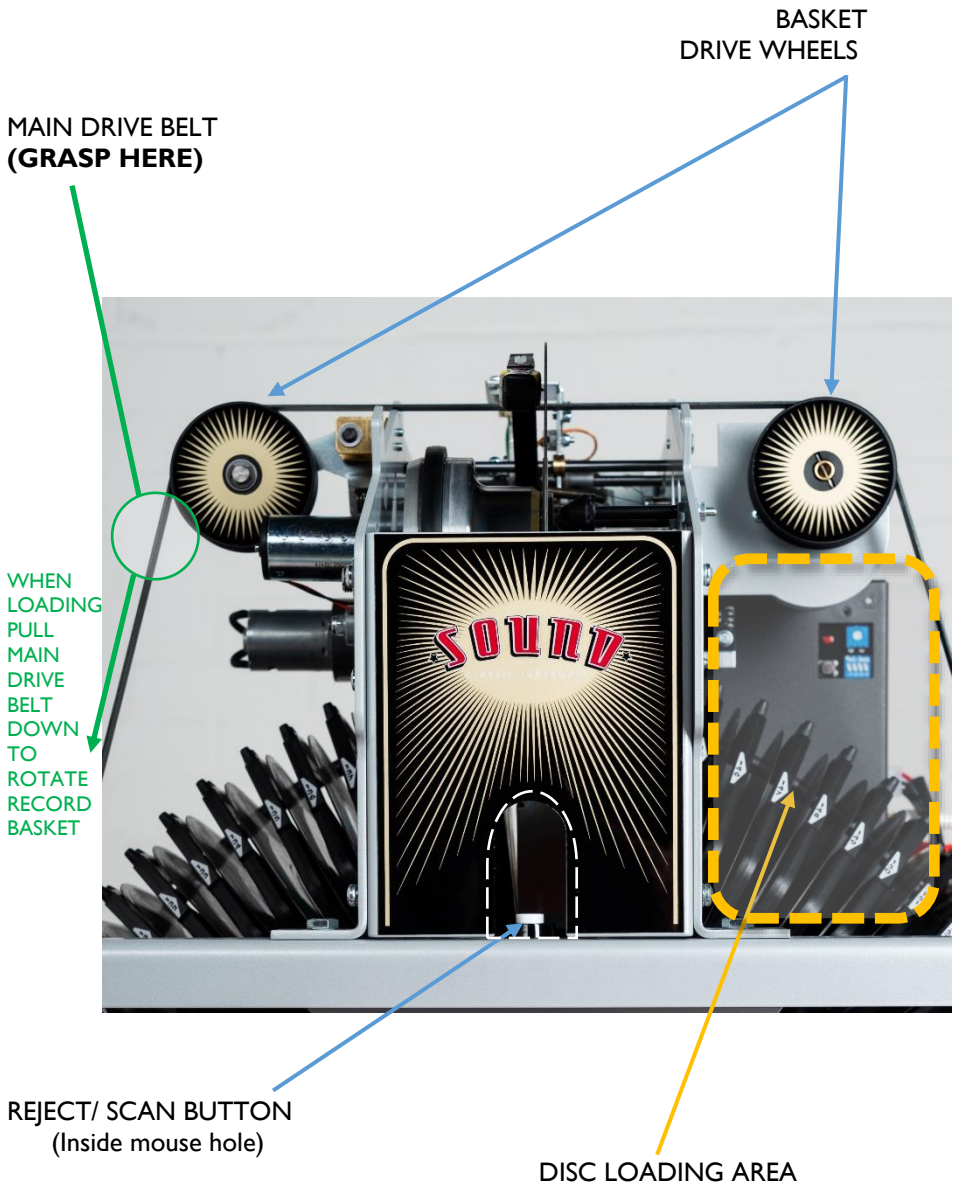
ENSURE THE LID IS ALWAYS IN PLACE WHEN THE JUKEBOX MECHANISM IS IN OPERATION

THE JUKEBOX MECHANISM CONTAINS MOVING AND ROTATING PARTS.

PLEASE BE VERY CAREFUL WHEN LOADING OR OPERATING THE JUKEBOX.

ENSURE THAT LOOSE CLOTHING, JEWELRY, LONG HAIR ETC ARE KEPT AWAY FROM THE MECHANISM AND ROTATING BASKET.

4.1 Mechanism Main components



4.2 Loading Records

Ensure the mechanism is **NOT** playing a selection before loading/unloading any records. Stand at the front of the unit then follow the instructions below while referring to figure 4.1.

WARNING - DO NOT PLAY WARPED RECORDS AS THIS COULD DAMAGE THE PLAYING MECHANISM.

- i. Locate the Main Drive Belt as shown in fig 4.1. To load records the drive belt should be manually rotated which will in turn rotate the record basket. This allows discs to be loaded in to the basket via the Disc Loading Area.
- ii. Grasp the Main Drive Belt as shown on fig 4.1. Now pull it gently downwards. This will rotate the basket anticlockwise.

WARNING – WHEN MANUALLY ROTATING THE BASKET ENSURE THERE ARE NO ITEMS IN THE WAY SUCH AS LOOSE CLOTHING / FINGERS / JEWELLRY/ TOOLS ETC AS THESE COULD BECOME CAUGHT AS THE BASKET ROTATES AND CAUSE DAMAGE OR INJURY.



- iii. Continue to rotate the basket in this way until the required record slot is positioned approximately in the centre of the Disc Loading Area as shown on fig 4.1.

Each slot is numbered and the triangular sticker points towards the specified slot. In the image on the left disc 136 should be placed to the right of the 136 sticker as illustrated by the dashed orange line.



- iv. Now slide the chosen record into the required slot in the basket. If the record will not slide cleanly in to the required slot, remove it then rotate the basket again to ensure the slot is in the centre of the Disc Loading Area.

When inserting the disc, Side A should face towards the LEFT of the slot

Side B should face towards the RIGHT of the slot.

v. Vinyl Pop is supplied with a title card book which can be populated with track labels and used for recording all jukebox records and selections. It is important to ensure records are in the correct numbered slots and facing the right direction to ensure accurate selections can be made.

DID YOU KNOW!

Sound Leisure's Vinyl jukebox mechanism can play both "dinked" and "none dinked" records. "Dinked" records (below right) have a large hole at the centre of the disk, and "none dinked" records (below left) have a small hole in the centre of the record.



5.0 The Remote Control

All aspects of the jukebox are controlled using the supplied Remote Control.



6.0 Jukebox Controls

6.1 Making Selections

When the records are installed and the labels printed and placed in the title card book, selections can be made using the included remote control.

6.1.1 Making selections via the remote control

To make a selection via the remote control enter a 3 digit track number using the numeric section of the remote control. For example, enter:

136 to play **side A** of the record in slot 136

236 to play **side B** of the record in slot 136

The record mechanism will rotate to that position on the basket and then play the selected track.

The relevant number will show in the display (shown above)

6.2 Building a Playlist

Continue to make selections using the remote control and the jukebox will store these in a playlist and automatically play the desired tracks back in the order they were inputted.

6.3 Rejecting the currently playing track – using remote control

To eject the record currently playing, press the Reject Track button on the remote control.

6.4 Rejecting the currently playing track – at the jukebox

To eject the record currently playing without the remote control, press the eject button on the mechanism located in the “mouse hole” at the front of the jukebox.

6.5 Next & Previous track

Pressing the “Next” >> (skip forward) button on the remote control will eject the record playing and play the next selection (if more than one selection is waiting in the playlist.) If no additional selections are waiting to be played the record will be ejected and the mechanism will remain idle.

Pressing the “previous” << (skip backward) button on the remote will eject the

record currently playing then reselect it and play it again from the start.

6.6 Adjusting the volume

To increase or decrease the volume level of the jukebox press the VOL I +/- buttons on the remote. This will increase/decrease the volume on the Vinyl Pop internal speaker.

If you have external speakers connected to Vinyl Pop, the volume of these will also increase and decrease as the volume setting is changed.

Please refer to section 10 - Connecting External Speakers.

6.7 Mute

Pressing the 'MUTE' key on the remote, will instantly mute the sound on all speakers. The display will show 'L —'

To return the volume to the previous level press any of the volume +/- keys.

6.8 Keyboard Cancel

Should a mistake be made whilst entering selections via the remote control, pressing KYBRD CANCEL will clear any partially entered numbers. The required track number can then be re-inputted.

6.9 Power

Pressing the Power button will drop the Vinyl Pop in to standby mode. To take the jukebox out of standby mode from the Power button again.

Automatic Playback modes

6.10 Shuffle Mode

This feature provides automated, randomised playback of records.

To enable shuffle mode, press the SHUFFLE ON button on the remote control (FIG 5.0). "ShON" will appear in the display and a decimal place will appear in the bottom right corner on the display (shown right.).



The jukebox will randomly select and play records (A and B sides) until shuffle mode is disabled or the jukebox is turned off.

To disable the shuffle play feature press the SHUFFLE OFF button on the remote control. “ShOFF” will be displayed briefly on the display and the decimal place indicator will be removed.

6.11 Sequential Play

This feature automatically plays disks in ascending order e.g. 1A, 1B, 2A, 2B, 3A, 3B and so on. The mechanism commences playback from its current position (e.g. 12A) and then plays sequentially until the feature is disabled. e.g. 12B, 13A, 13B, 14A etc.

To enable sequential mode, first press SHUFFLE OFF on the remote handset (FIG 5.0) to ensure no other shuffle modes are active.

Now press “F2” on the remote control. “ORDER” will show on the display and a decimal point will illuminate on the display.

To disable Sequential mode press “SHUFFLE OFF” on the remote control (FIG5). The decimal place indicator will be removed.

PLEASE NOTE:

Sequential play cannot be activated if shuffle mode is already enabled.

If shuffle mode (6.5) is enabled when sequential playback is already active, shuffle mode will override sequential play.

If a track is playing at the time shuffle or sequential mode are enabled, the feature will commence after the currently playing track has ended.

If selections are made whilst shuffle mode or sequential playback are active, the current track will complete playback, then the manually selected track(s) will play. Once playback of the manually selected track(s) is complete, the automatic playback will resume.

6.12 Adjusting the lighting brightness

It is possible to adjust the brightness and colour of the lighting of your Jukebox via the remote control.

There are two settings available:

- Top Interior Light Brightness - This is the brightness of the main light which rear illuminates the top of the jukebox mechanism.
- Bottom Interior Light Brightness - This is the brightness of the main light which rear illuminates the top of the jukebox mechanism.

6.12.1 To adjust the brightness of the Top Interior Light:

1. Press the COLOUR ON button ONCE on the remote control. The LED display will show “Col 1”
2. The brightness is set by pressing the button keys 0-9 on the remote. 0 is the lowest setting, 9 is the brightest setting.
3. Once the desired brightness is set, press the COLOUR OFF button to exit the brightness mode. “Col 1” will no longer be shown on the LED display.

6.12.2 To adjust the brightness of the Lower Grille Light:

1. Press the COLOUR ON button TWICE on the remote control. The LED display will show “Col 2”
2. The brightness is set by pressing the button keys 0-9 on the remote. 0 is the lowest setting, 9 is the brightest setting.
3. Once the desired brightness is achieved press the COLOUR OFF button to exit the brightness mode. “Col 2” will no longer be shown on the LED display.

7.0 Remote control (Vinyl Pop) – Unused buttons

Sound Leisure use a standard remote control for all the vinyl and CD jukeboxes in their range. Some buttons on the remote are not used by the Vinyl Pop

These are as follows:

JUKE, BT, AUX

PI, P2, P3, P4

HOLD - On / Off

BT Pair

F1, F2, F3, F4

Red, green, yellow, blue.

VOL 2 +/- buttons.

8.0 Bluetooth

The Bluetooth accessory allows most Bluetooth enabled devices to wirelessly stream audio directly to the Jukebox.

8.1 To pair an audio device to the Bluetooth accessory:

1. Enable the Bluetooth connection on your audio device and begin searching for devices (refer to your audio device manual for instruction on how to do this).
2. From the list of found devices, select 'SoundLeisureJB'.
 - If your audio device asks for a confirmation, press ok
 - If your audio device asks for a password, enter '1234'.
3. Begin playback of audio on the audio device to stream music to Vinyl Pop.

8.2 Pairing a new device:

Once an audio device is paired with the Bluetooth accessory, it will remain paired until this audio device becomes unavailable. To pair a new device:

1. Disable Bluetooth on the originally paired audio device.
2. On the new audio device, enable the Bluetooth connection and begin searching for devices (refer to your audio device manual for instruction on how to do this).
3. From the list of found devices, select 'SoundLeisureJB'.
 - If your new audio device asks for a confirmation, press ok
 - If your new audio device asks for a password, enter '1234'.
4. Begin playback of audio on the audio device to stream music to Vinyl Pop.

To connect any further devices repeat the pairing procedure above (8.2)

9.0 Adjusting amplifier setup

The amplifier EQ has been pre-set to match the speaker arrangement, however should you wish to adjust the sound equalisation, Bass, Mid and Treble controls are provided on the rear of the cabinet (shown right.) Turn any control Clockwise to increase and anti-clockwise to decrease the required EQ.



10.0 External Speakers

The Sound Leisure DI Digital Amplifier is configured as a stereo 30w setup. The internal single cabinet speaker provides a central stereo image only, so 2 additional outputs (left and right) are provided for the connection of external speakers for a full stereo image.

10.1 To connect external speakers

On the rear of the jukebox cabinet locate the 2x speaker connection pads (shown right)

Connect a 2 core speaker cable to each of the speaker connection pads, ensuring the positive (+) cable is connected to the red terminal on each speaker connection pad.

Run the speaker cable to the location of the external speakers and connect the speaker cable, also ensuring the positive (+) cable is correctly connected to each speaker.

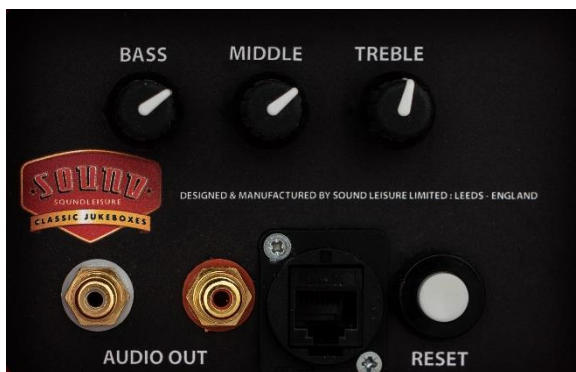


11.0. Audio/Line Out

The Sound Leisure D4 Digital Amplifier includes An Audio/Line Out option to allow the vinyl Pop to be connected to an external amplifier.

11.1 To connect the Line Out

Source a good quality Stereo RCA audio cable (2x RCA Male to 2x RCA Male).



On the rear of the jukebox cabinet, identify the AUDIO OUT connections (shown right)

Connect one end of the Stereo RCA audio cable to the AUDIO OUT sockets on the Vinyl Pop, and the other end of the Stereo RCA audio cable to a suitable AUDIO IN on your external amplifier.

The audio OUT level from the DI amplifier is set using the remote control.

To increase or decrease the Audio Output level, use the VOL I +/- buttons.

As the volume on the Vinyl Pop is increased, the volume of the external amplifier will also increase. This is useful if the Vinyl Pop is to be connected to a multi-room audio system.

Recommended Setup.

SL would recommend the external amplifier be set to approximately half volume. Now use the VOL I +/- buttons on the Vinyl Pop remote control to adjust the playback volume level as normal.

CE Declaration of Conformity

We, Sound Leisure Ltd, UK, declare under our sole responsibility that the following products

SL15, SL45, Manhattan, Melody, 1015, 1015 Slimine, Gazelle, Britannia, Rocket and Vinyl Pop jukeboxes

To which this declaration relates is in compliance with the essential requirements of:

EMC

Council Directive 2014/30/EU

Standards EN 55022 & EN 55024

Electrical Safety

Low Voltage Directive 2014/35/EU

Standards EN 60065:2001(7th Ed) + A1:2005 + A2:2010 + 2014

When installed in accordance with the manufacturers specifications

Sound Leisure Ltd

Sandleas Way

Leeds

West Yorkshire

England

LS15 8AR

Signed on behalf of Sound Leisure Ltd



Chris Black

Managing Director

Date of issue: 21st November 2017

NOTES

NOTES

NOTES



For any further information or technical support please contact:

Sound Leisure Limited
Sandleas Way
Leeds
LS15 8AR
Yorkshire
England

T: +44 (0) 113 232 1700
F: +44 (0) 113 232 1701

E: sales@classicjukeboxes.co.uk

www.classicjukeboxes.co.uk
www.soundleisure.com



@classicjukebox



[Facebook.com/classicjukeboxes](https://www.facebook.com/classicjukeboxes)

